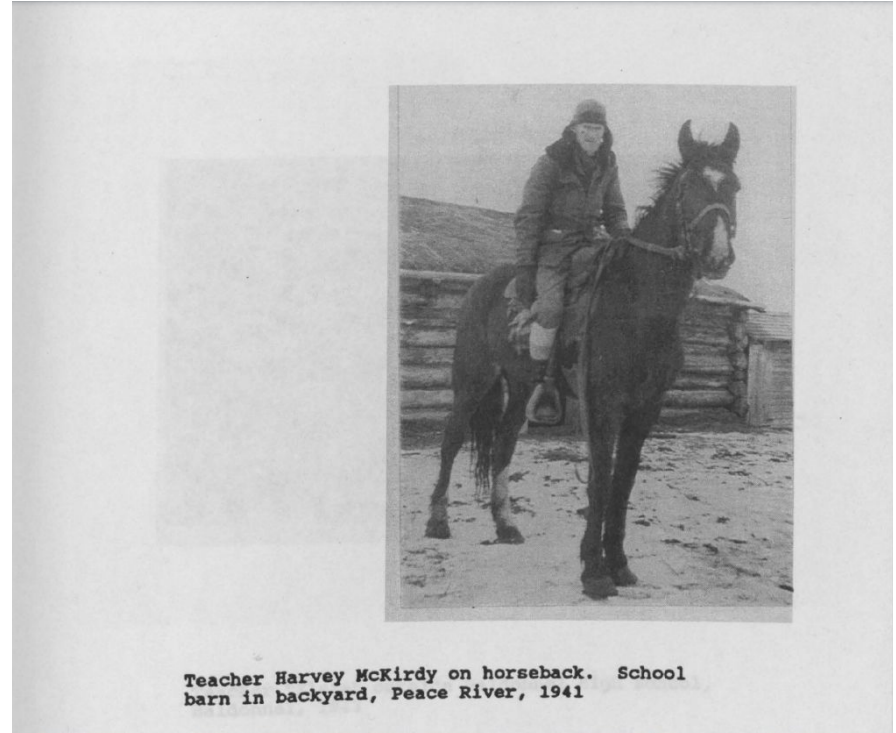


# 100 years of getting to Baldonnel School

Baldonnel School opened in 1923.

The first Baldonnel School was a log building.

Teachers and students would walk, cycle or ride horseback on trails shared by wild animals. One new teacher tried to “shoo” a moose away from the school and was chased by the moose instead! The kids thought that was funny!





This is how school children dressed in the 1920s.

In the 1920's, World War 1 had just ended.

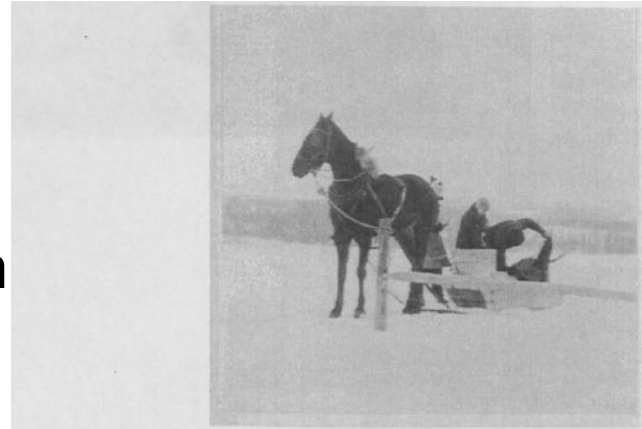
In the winter, people would snowshoe or ski.



# Getting Around Baldonnel in the early 1930's

“On several occasions Mr. Wilbur Wiles would hitch his team to his sleigh and along with his wife Ethel would take ladies to meetings. Other means of transportation were **stone-boats**, buggies, wagons, and horseback. Some women would walk for miles.”

(Excerpt taken from Alaska Highway Article: “Early History of the Baldonnel Women’s Institute.” February 22, 2023.



Typical homemade wooden sleigh used in winter by students teachers and the community, Peace River, 1941

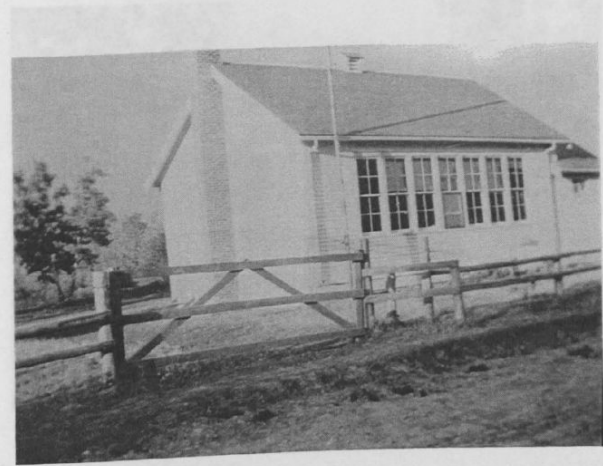
**This is a stone boat. Horses used to pull it. It carried rocks, hay bales or people.**



# Baldonnel High School and Primary School in the 1940's



Teacher "Elsie" outside Baldonnel High School,  
Baldonnel, 1943

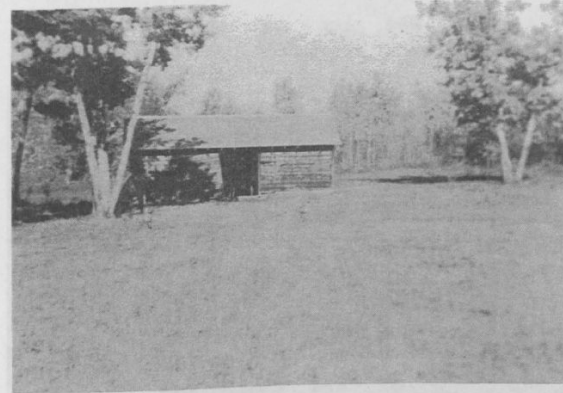
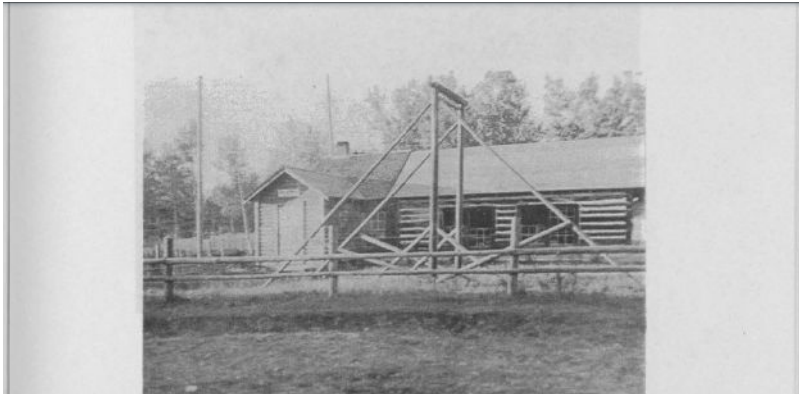


Baldonnel Primary School Building,  
Baldonnel, 1942

The log school no longer exists, but you can still see the primary school down the road. The Forrest Family lives in it now.

# Getting to Baldonnel School in the 1940's

Because so many children rode their horses (or took dog sleds in the winter), Baldonnel School had a barn! The Play area had a swing and a field.



Baldonnel, School Barn and play area,  
Baldonnel, 1942

# In the 1940's

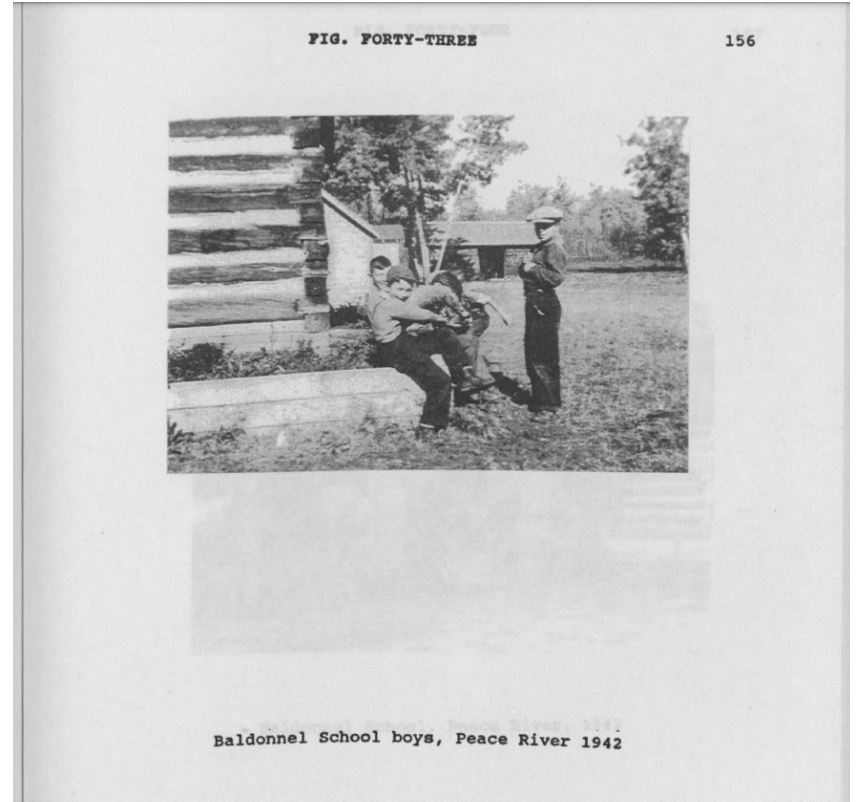
World War II was happening.

The Alaska Highway was built in 9 months!

Teachers began driving their cars to school!

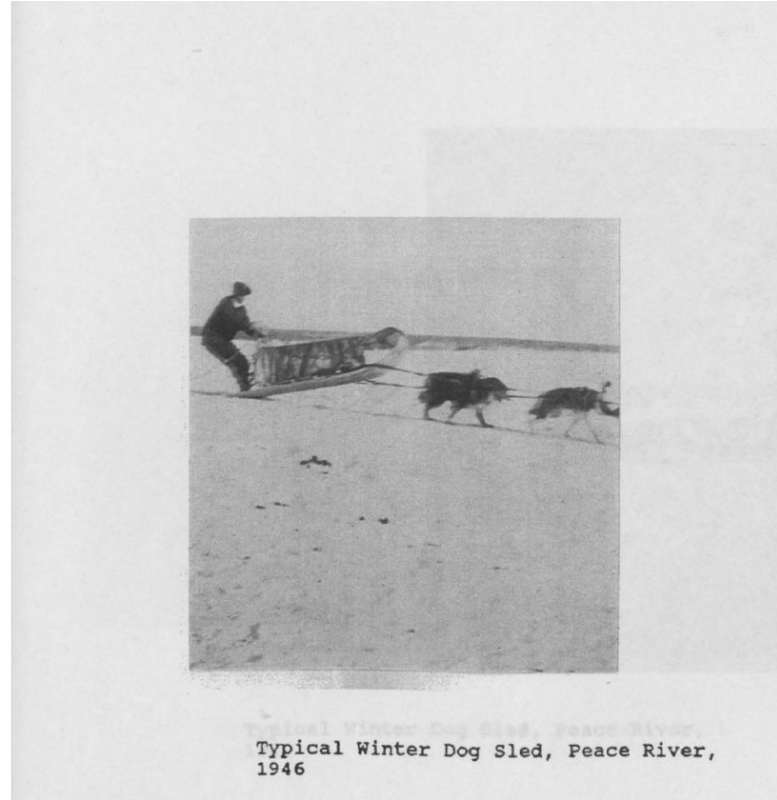
This is how school children dressed in the 1940's.

Teachers LIVED WITH THE STUDENTS!



# Dog Sledding to school in the 1940's

What tricks can your dog do?



# Getting to Baldonnel School in the 1950's

## In the 1950's:

They struck oil in 1952.

In 1957, the [first bridge across the Peace River failed.](#)

The Railway came to Fort St. John in 1958, which encouraged more people to settle up here. Little Baldonnel School began to burst at the seams.



# The 1960's

**Fort St. John gets a hospital in 1962! See the cars that people used?**

**1967 W.A.C. Bennett Hydroelectric Dam is completed.**

**Baldonnel school still exists in the bustling 50's and 60's. However, as the population boomed and one room schoolhouses began to fill up, the province decided that all of the little rural schools should join together and create one big school.**



# In the 1970's... Oh no! Where is Baldonnel School?

In the 1970's, school children from Baldonnel, Two Rivers and Sunrise are all bused to Airport Elementary School. The Baldonnel Primary School becomes a home for a local family. The log buildings are moved and now no longer exist. Rural schools are no longer the centre of the community.



This class of Grade 4/5 students was taught by Mr. Brandt at the new Airport School.



# A Kindergarten Class from the 1970's in Airport School.



# 1983! The New Baldonnel School!

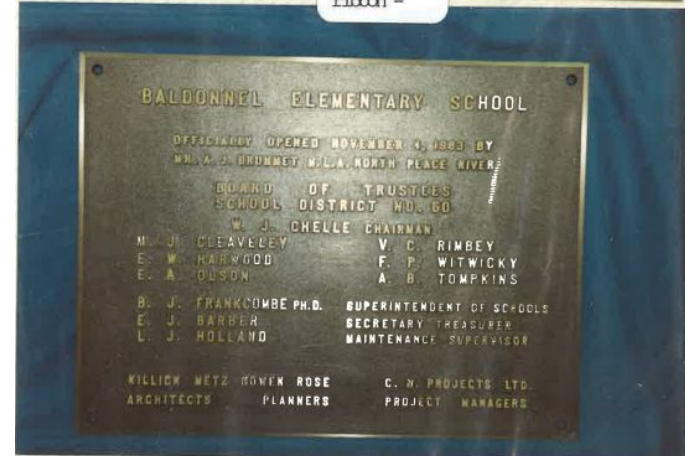
November 4, 1983 is the official grand opening of the new Baldonnel School!  
Intermediate students **walk** from Airport Elementary.  
Primary School students are **bused**.



*The walk took FOREVER.*



Tony Brunnet cutting the ribbon -



# Recognize anyone?

Bentley Clarke's Mom made a tribute cake to honour the original one from 1983!



Cake made by  
Pauline Lindley

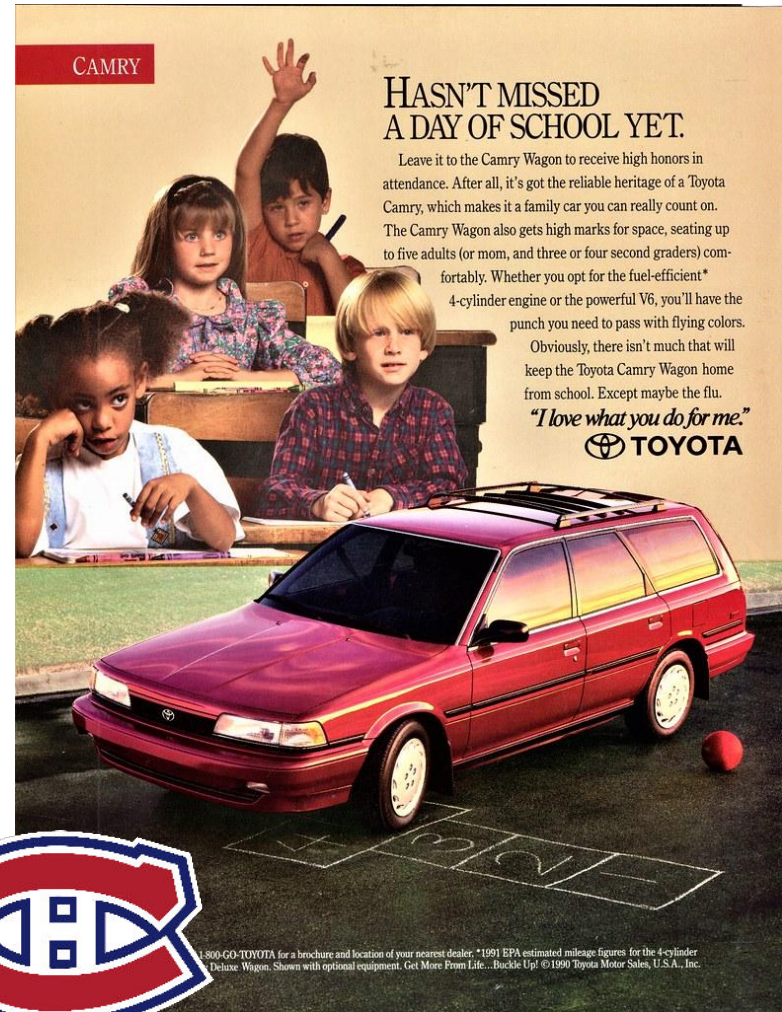


# In the 1990's

Baldonnel School continues to welcome all the kids from Two Rivers, Baldonnel, Sunrise and the Alcan & Forest Lawn trailer parks!

Kids walk, bike, bus and get driven to schools.

1993 is the last time a Canadian Team wins a Stanley Cup. Go Habs Go!




CAMRY

## HASN'T MISSED A DAY OF SCHOOL YET.

Leave it to the Camry Wagon to receive high honors in attendance. After all, it's got the reliable heritage of a Toyota Camry, which makes it a family car you can really count on. The Camry Wagon also gets high marks for space, seating up to five adults (or mom, and three or four second graders) comfortably. Whether you opt for the fuel-efficient\* 4-cylinder engine or the powerful V6, you'll have the punch you need to pass with flying colors. Obviously, there isn't much that will keep the Toyota Camry Wagon home from school. Except maybe the flu.

*"I love what you do for me."*



\*1-800-GO-TOYOTA for a brochure and location of your nearest dealer. \*1991 EPA estimated mileage figures for the 4-cylinder Deluxe Wagon. Shown with optional equipment. Get More From Life... Buckle Up! ©1990 Toyota Motor Sales, U.S.A., Inc.



## In the early 2000s

Only the hairstyles have changed!  
Kids still bike, bus and get driven to school.

Fun Fact: Rare dinosaur tracks are found. The iPhone is invented.

Check out the photos of kids from the 2000s in the primary and intermediate hallways.



## 2010-2019

The children of the kids who went to Baldonnell School in the 80's are now going to Baldonnell School!

Fun Fact: Instagram was launched in 2010. For the first time ever, kids start bringing cell-phones & scooters to school.

Check out the photos of kids from the 2000s in the intermediate hallways!



# 2020-2023

The COVID pandemic happens and changes the way we go to school for a while.

Baldonnel School turns 100!

More kids are driven to school in private vehicles than bused. Kids still walk, ride bikes and scooter to school.



**Thank you from the Grade  $\frac{3}{4}$  Class of 2023/24**

We hope you enjoyed learning about the way kids have gotten to Baldonnel School for the last 100 years!

Watch for more 100th Anniversary Celebrations at the Winter Carnival on November 23!



This is how we said goodbye in the old days!